



TS-LD series Light-Duty Recovery Vehicle

Designed for light duty towing especially to access sheltered or basement car parks. Full hydraulic recovery system with integrated boom and wheel-lift improves efficiency due to its simple yet robust design.

Wheel-lifts folds into vertical position for greater manoeuvrability. The tow-forks are designed to fit into all makes of standard saloon car tyres.

The hydraulic secondary boom and 1.5MT electrical or hydraulic winch comes in handy for difficult recovery situations. Options to mount either a light-bar or revolving beacon.



Hydraulically extendable stinger (tow-grid) to reach out to the disabled car. Tow-forks slides along the horizontal cross-bar to fit various widths of wheel-track, from 'minis' to 'mercs'.

All load-bearing structures are made of high-tensile steel.

Above pictures shows a unit mounted on chassis with following specs :

GVW = 2.65 MT

GCW = 3.55 MT

Kerb wt = 1.50 MT

Wheelbase = 3.02 m

Suspended-load on grid = 1.00 MT (front-wheels of car)

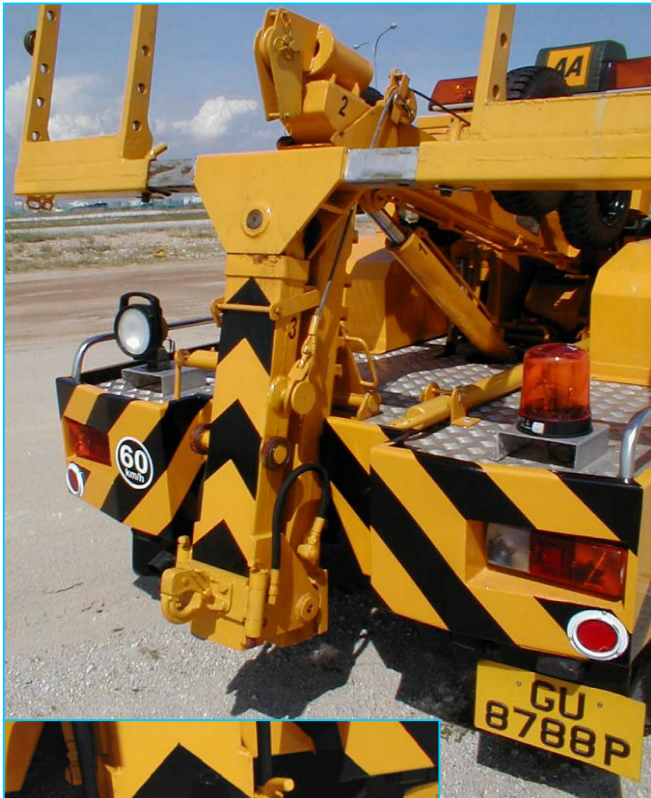
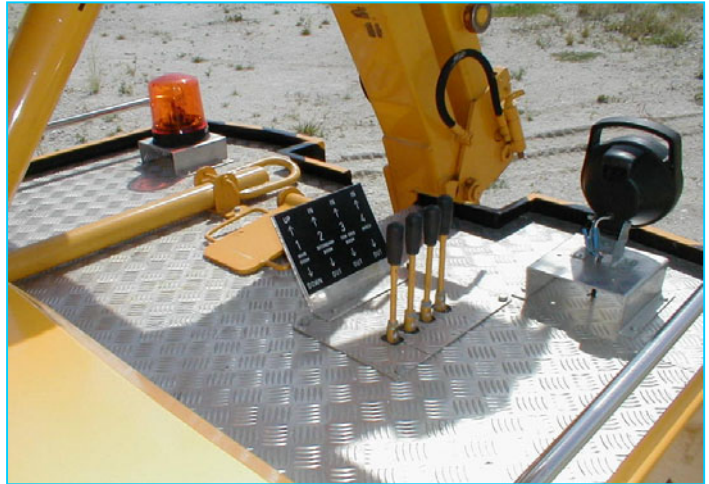
Max tow-rating = 2.0MT (approx weight of saloon car)



TS-LD series - Features Highlight



With the tow-forks taken down, it has an overall height of about 1.9 m to enter into most sheltered car-parks. Aluminium checker-plate deck, kerb-side control console and optional dolly wheels.



Provision for detachable tow-eye for towing trailers or via tow-bar .



Compact hydraulic system design allows the deck to be free from unsightly exposed hoses and fittings. Main boom cylinder incorporated with a load-holding check valve.

ZENITH Engineering Pte Ltd No 34 Joo Koon Circle Singapore 629060
Tel: (65) 6861 1100 Fax: (65) 6862 1948 Email : info@ze.com.sg Website : www.ze.com.sg

IG ZENITH Sdn Bhd (480123-H)
Lot 6975, Batu 12, Jalan Balakong, 43300 Balakong, Selangor, Malaysia
Tel: (60-3) 8962 1060/61 Fax: (60-3) 8962 1062