

# ZENITH

## Mobile Refuse Compactor

*Tailor-Made to your needs*



Established Since 1972



Heavy-Duty Version



**Body volume ranging from  
10 to 20 cubic meters**

### Safe & Reliable

- \* Compacting unit and refuse body integrated into one structure
- \* Built-in electrically driven hydraulic power & control system

### Practical & Aesthetic Design

- \* Tapered body allows easy discharge of refuse
- \* Bubble-door improves compaction volume

### Versatile customization

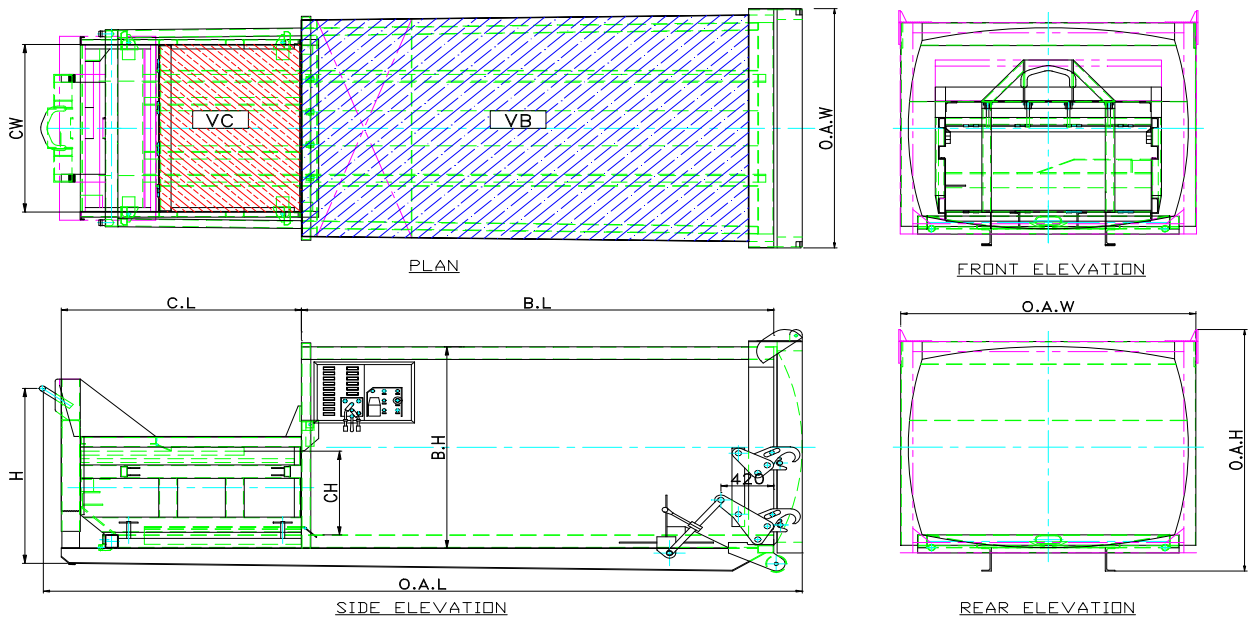
- \* Front or side bin lifter
- \* Built to customer's specified length to fit into bin center
- \* Option for hydraulic or mechanical tailgate-lifting

Zenith Engineering Pte Ltd No 34, Joo Koon Circle, Jurong, Singapore 629060  
Tel: (65) 6861 1100 Fax: (65) 6862 1948 Email: info@ze.com.sg Web: www.ze.com.sg

IG ZENITH SDN BHD (480123-H)  
Lot 6975, Batu 12, Jalan Balakong, 43300 Balakong, Selangor, Malaysia  
Tel: (60-3) 8962 1060/61 Fax: (60-3) 8962 1062 Email: igze@po.jaring.my



## Mobile Refuse Compactor (Suitable for Commercial and Domestic Waste)



Model		MRC90R	MRC100R	MRC110R	MRC130R	MRC140R	MRC150R	MRC175R	
<b>Dimensions (mm) tolerance +/- 3%</b>									
External	- Overall l length	OAL	4,700	5,000	5,300	5,500	5,800	6,050	6,700
	- Overall width	OAW	2,500	2,500	2,500	2,500	2,500	2,500	2,500
	- Overall height	OAH	2,400	2,400	2,400	2,400	2,400	2,400	2,400
Compaction Chamber	- Internal length	BL	2,311	2,611	2,911	3,161	3,461	3,761	4,411
	- Internal height	BH	2,260	2,260	2,260	2,260	2,260	2,260	2,260
Filling Opening	- Length (internal)	CL	2,100	2,100	2,100	2,100	2,100	2,100	2,100
	- Width (internal)	CW	1,500	1,500	1,500	1,500	1,500	1,500	1,500
	- height (internal)	CH	750	750	750	750	750	750	750
	- height (external)		1,570	1,570	1,570	1,570	1,570	1,570	1,570
<b>Capacity (tolerance +/- 3%)</b>									
Volume	Body (M3)	VB	8.5	9.5	10.5	11.5	13.0	14.0	16.5
	Hopper (M3)	VC	1.50	1.50	1.50	1.50	1.50	1.50	1.50
Tare Weight	Approx (kg)		3,400	3,550	3,700	3,850	4,000	4,200	4,650
Max Payload (compacted density 0.75)	Approx (kg)		6,000	6,500	7,000	8,400	8,900	10,000	11,500
Cycle Time	seconds		39	39	39	39	39	39	39
Recommended GVW	Approximated (kg)		14,000	15,000	16,000	18,000	20,000	24,000	26,000

Data for custom-built dimension : Body volume / cm = 0.038m<sup>3</sup> (eg, an increase of 1.0m<sup>3</sup> would result in an increase of 263mm in length)  
Tare wt / cm = 11.0 kg , payload / cm = 30 kg

### Standard features

Operation	Hydraulically Operated Ram
Compaction Force	320 kN (achieving a compaction ratio of 1 : 3)
Body	4.5 mm Structural Steel fully welded body
Tailgate	* 4.5 mm top hinged leak proof tailgate * Mechanical lock & rear door opens by gravity
Electrical	* Left or right side control panel (option available for panels on 2 sides) * 1 length 5m of 4-core electrical cable c/w 4-pin socket 16A rating (5-pin available upon request) * Build in hydraulic power-pack , 3 phase, 50 Hz, 400V, 4.0KW (approx 5.4HP)

### Optional Items

- \* Detachable or integrated bin lifter suitable for 240 & 660 ltr DIN bins, powered by compactor's power pack. Cycle time based on approx 250kg load : up~13 secs, down~6secs
- \* Hydraulic bin-lifter levers on both sides of compactor .
- \* Corrosion resistance nickel-chromed rods for cylinders (recommended if rod is exposed when stopped)
- \* Additional rear hook-ring & rollers to allow front OR rear hook-up
- \* Low Hyd-Oil level audio-visual warning and cut off
- \* Hydraulically operated raise / lowering and locking discharge door .

Note : Due to the need for continuous improvement, the above specifications are subject to change without prior notice